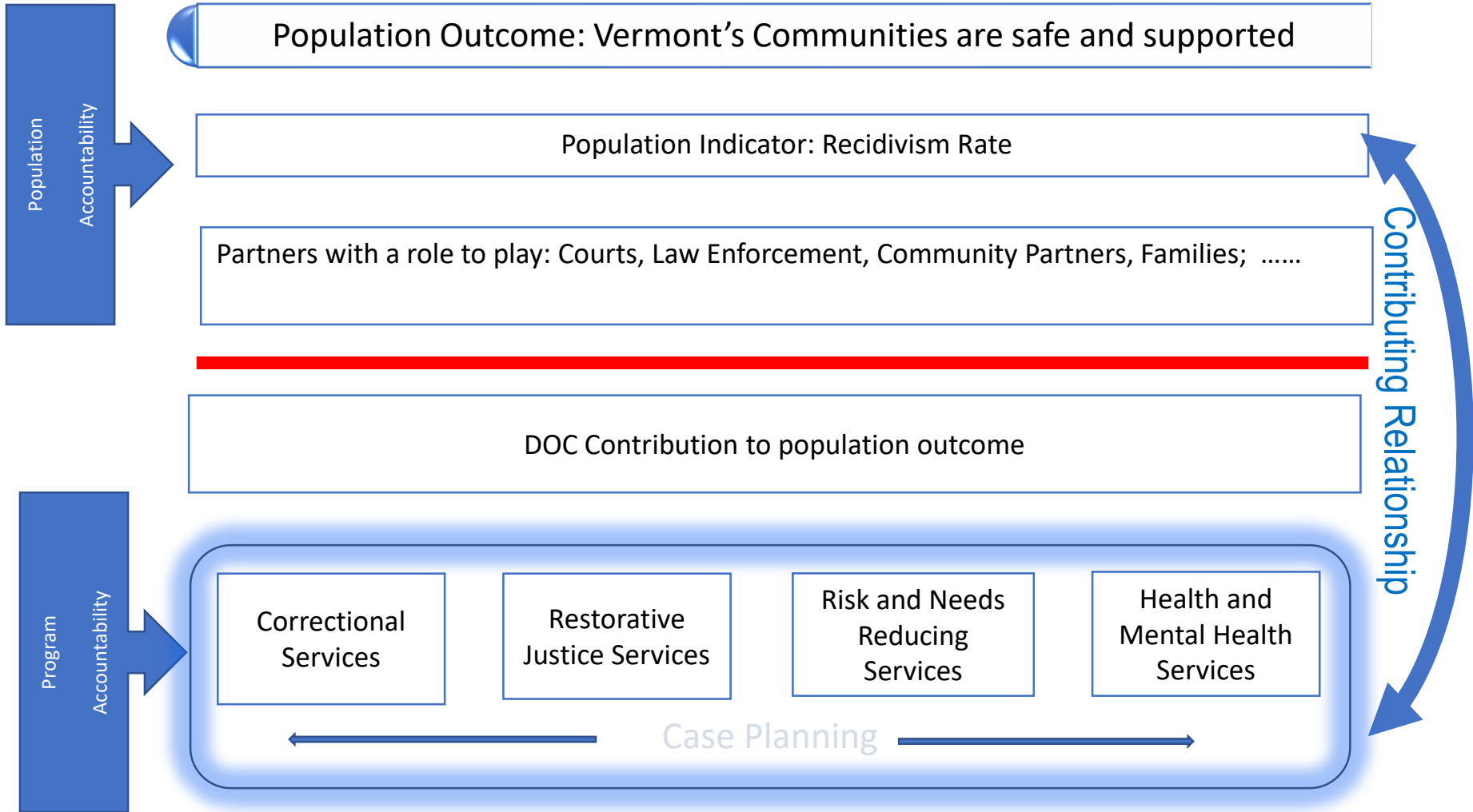


The logo features a large green oval with a white crescent shape on its left side. The background is white with several thin, light gray curved lines and dashed lines radiating from the center.

Vermont Department of Corrections

Overview
January 2019



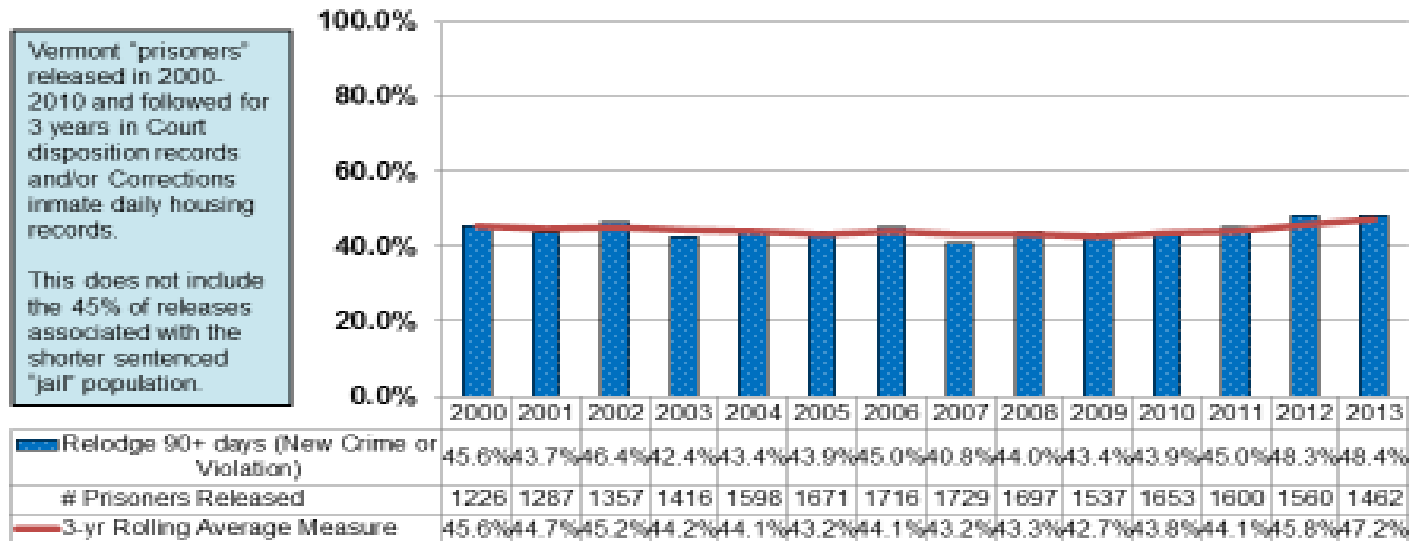
How are we doing?

Population Level Indicator

Indicator: Recidivism Rate

Prisoner Relodging - Statutory Measure

Relodging of Prisoners for 90+ Days for New Crime and/or Violation



Note: Definition for prisoner is a person sentenced to serve (maximum) more than one year (US Department of Justice, Bureau of Justice Statistics).

Citation- 2011 Act 41 Section 5: "The Department shall calculate the rate of recidivism based upon offenders who are sentenced to more than one year of incarceration who, after release from incarceration, return to prison within three years for a conviction for a new offense or a violation of supervision resulting, and the new incarceration sentence or time served on the violation is at least 90 days."

General Overview

Mission Statement: In partnership with the community, we support safe communities by providing leadership in crime prevention, repairing the harm done, addressing the needs of crime victims, ensuring accountability for criminal acts, and managing the risk posed by offenders.

- 6 correctional facilities
- 12 Probation and Parole offices
- 1003 employees
 - 464 correctional officers (COI, COII)

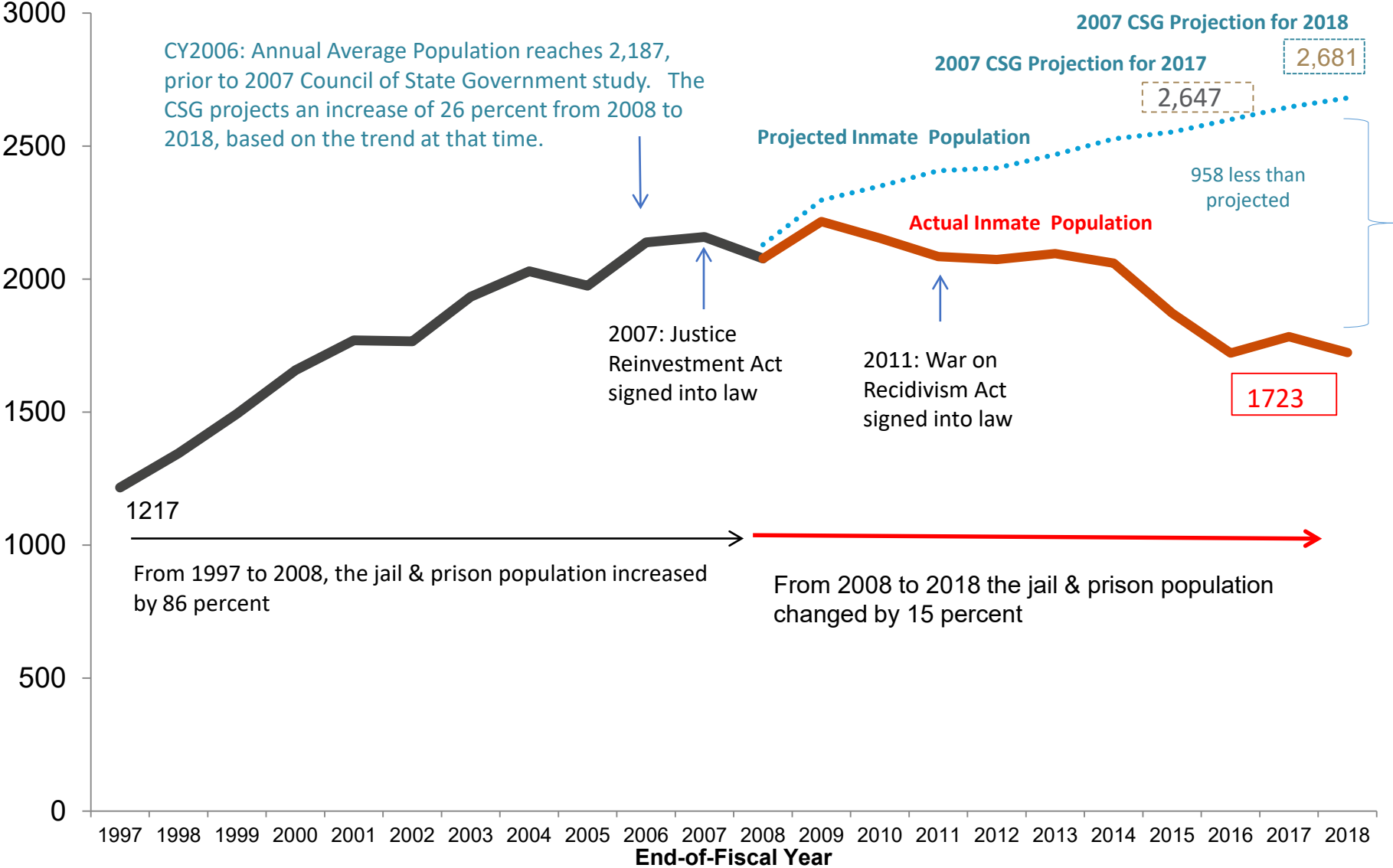
Program : *Correctional Services*

Current Measures: How Much

Counts based on June 30th Sample for each year

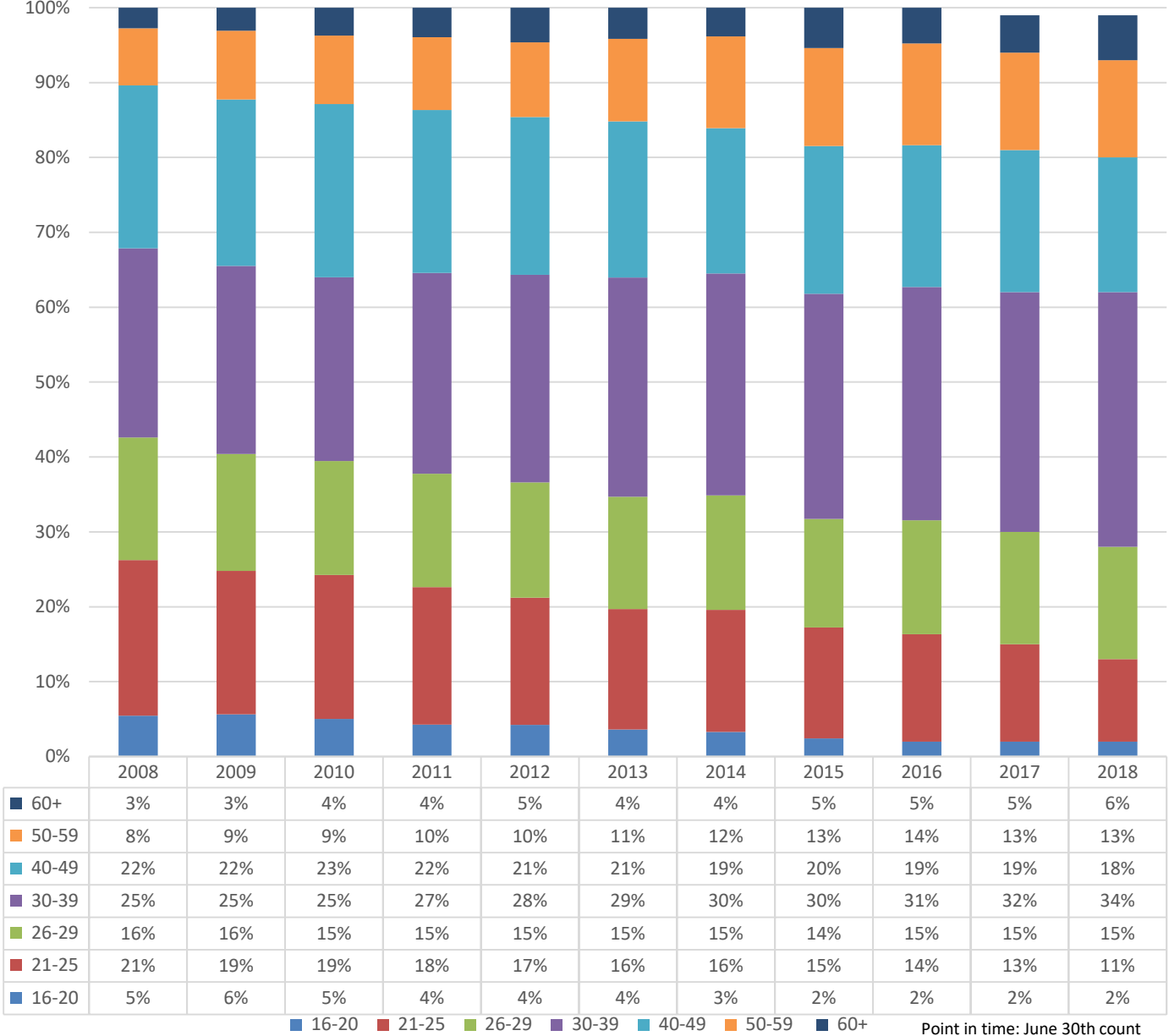
| Measure | FY2008 | FY2017 | FY2018 | % Change Past Decade | % Change Past Year |
|------------------------|--------|--------|--------|----------------------|--------------------|
| Persons Seen | 11,708 | 9,626 | 8,724 | -25.5% | -9.4% |
| Incarceration | 2,082 | 1,784 | 1,723 | -17.2% | -3.4% |
| Reentry | 996 | 983 | 855 | -14.2% | -13.0% |
| Intermediate Sanctions | 718 | 782 | 736 | 2.5% | -5.9% |
| Parole | 1,049 | 947 | 840 | -19.9% | -11.3% |
| Probation | 6,863 | 5,133 | 4,570 | -33.4% | -11.0% |
| Housed under OOS | 529 | 269 | 211 | -60.1% | -21.6% |

Vermont Inmate Population



All years are census counts from June 30th at end of each fiscal year.

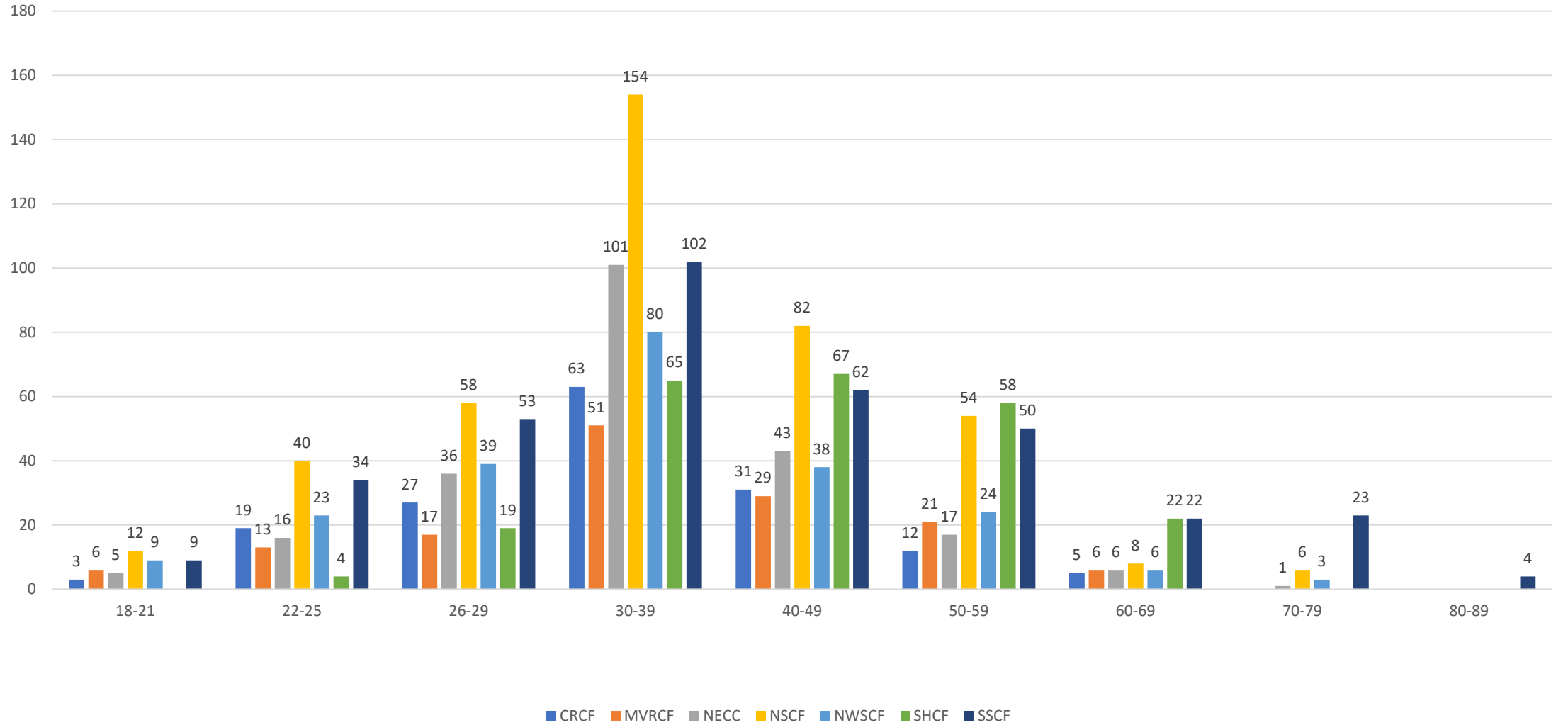
Incarcerated Inmate Age Trends



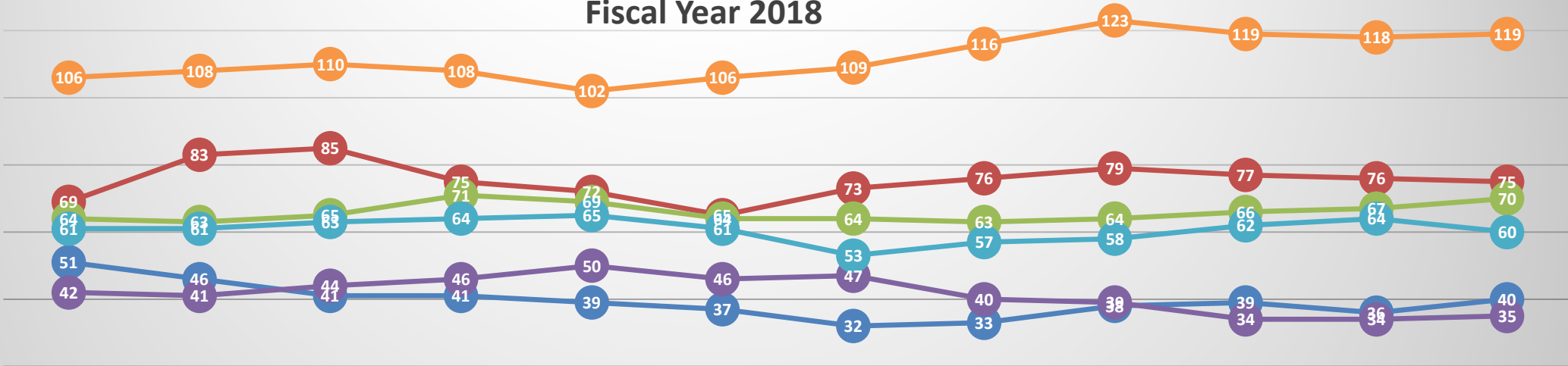
Point in time: June 30th count

Age Group by Facility

Point in Time 1/17/19



Detention by Location Average per Month Fiscal Year 2018

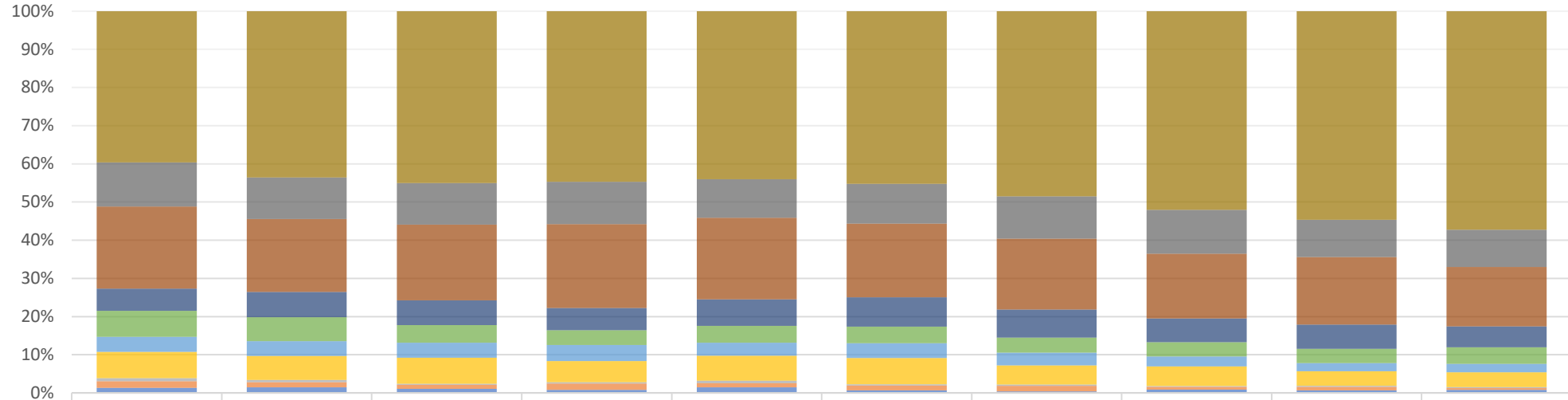


| | JUL-17 | AUG-17 | SEP-17 | OCT-17 | NOV-17 | DEC-17 | JAN-18 | FEB-18 | MAR-18 | APR-18 | MAY-18 | JUN-18 |
|-------|--------|--------|--------|--------|--------|--------|--------|--------|--------|--------|--------|--------|
| CRCF | 51 | 46 | 41 | 41 | 39 | 37 | 32 | 33 | 38 | 39 | 36 | 40 |
| MVRCF | 69 | 83 | 85 | 75 | 72 | 65 | 73 | 76 | 79 | 77 | 76 | 75 |
| NECC | 64 | 63 | 65 | 71 | 69 | 64 | 64 | 63 | 64 | 66 | 67 | 70 |
| NSCF | 42 | 41 | 44 | 46 | 50 | 46 | 47 | 40 | 39 | 34 | 34 | 35 |
| NWSCF | 61 | 61 | 63 | 64 | 65 | 61 | 53 | 57 | 58 | 62 | 64 | 60 |
| SSCF | 106 | 108 | 110 | 108 | 102 | 106 | 109 | 116 | 123 | 119 | 118 | 119 |

CRCF
 MVRCF
 NECC
 NSCF
 NWSCF
 SSCF

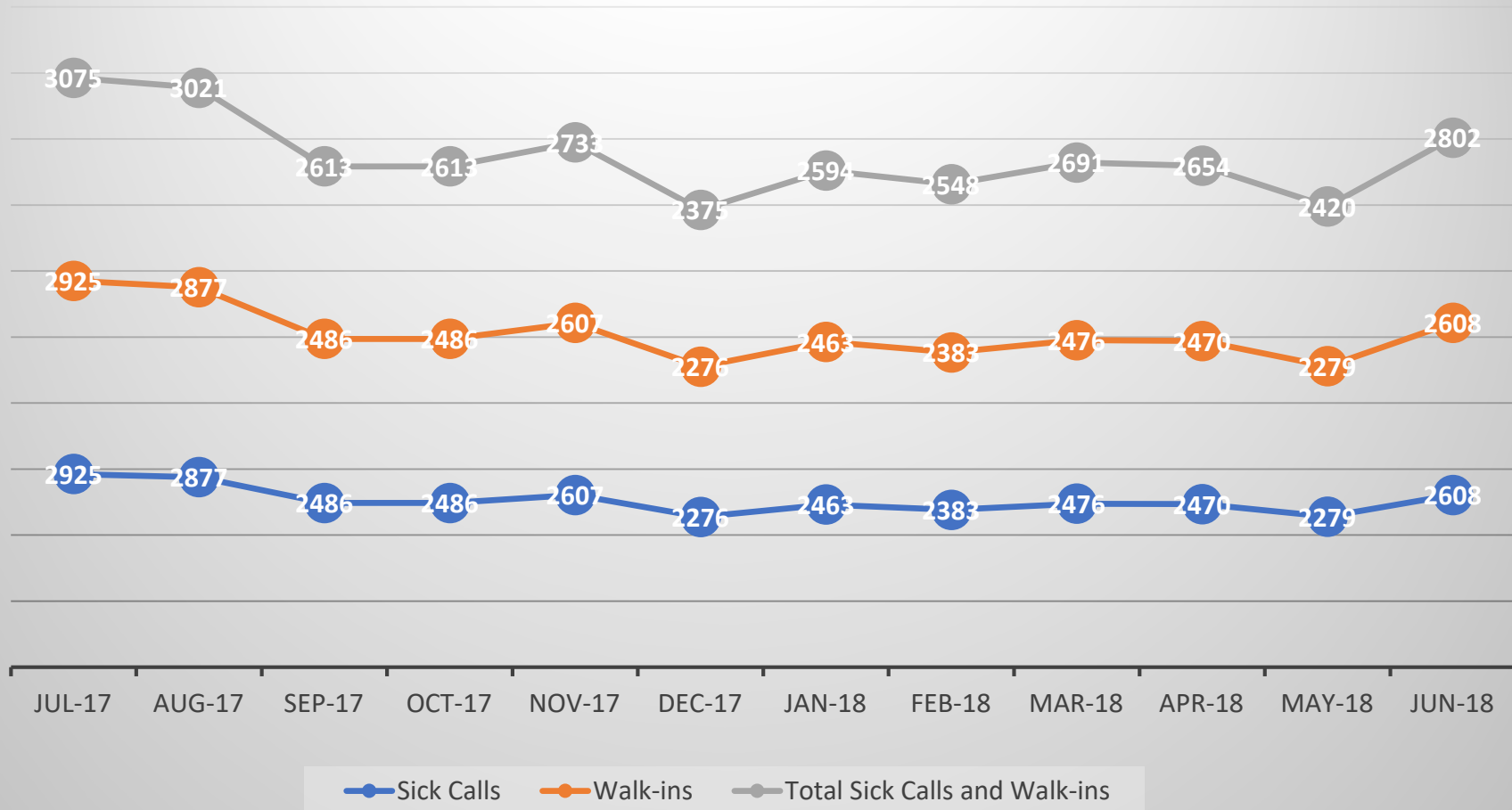
Incarcerated Population by Crime Type

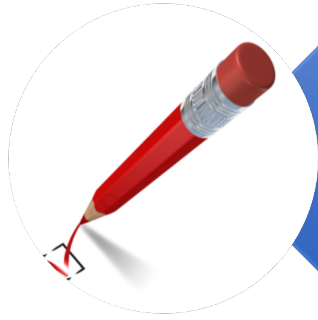
June 30th Counts



| | 2009 | 2010 | 2011 | 2012 | 2013 | 2014 | 2015 | 2016 | 2017 | 2018 |
|-----------------|------|------|------|------|------|------|------|------|------|------|
| Fel. Serious | 854 | 925 | 919 | 911 | 900 | 913 | 891 | 856 | 932 | 945 |
| Fel. Person | 249 | 231 | 222 | 226 | 207 | 210 | 204 | 188 | 166 | 161 |
| Fel. Property | 463 | 405 | 404 | 449 | 436 | 389 | 342 | 279 | 302 | 256 |
| Fel. Drug | 125 | 140 | 132 | 118 | 143 | 155 | 135 | 102 | 108 | 91 |
| Fel. Motor Veh. | 146 | 133 | 94 | 79 | 90 | 88 | 72 | 62 | 64 | 71 |
| Fel. Other | 85 | 83 | 81 | 86 | 70 | 78 | 61 | 43 | 36 | 37 |
| Misd. Person | 149 | 132 | 139 | 112 | 133 | 139 | 92 | 84 | 65 | 64 |
| Misd. Drug | 16 | 13 | 5 | 8 | 14 | 7 | 7 | 3 | 4 | 4 |
| Mis. Motor Veh. | 38 | 29 | 22 | 34 | 22 | 25 | 26 | 13 | 16 | 8 |
| Misd. Other | 29 | 31 | 22 | 16 | 30 | 14 | 8 | 14 | 12 | 13 |

Health Services: Sicks Calls





Results Based Accountability

- Evaluation of Effective Practices in Community Supervision (EPICS) implementation
- Evaluation of Policy Development
- In Progress:
 - Development of model for risk and needs reducing services
 - Development of model for case management